

BRAKE RELEASE KIT 29222 for

FA150KGMR *MAN RIDER*™ WINCH

This instruction sheet provides information for new brake release kit on a FA150KGMR *Man Rider*™ winch. Use this sheet in conjunction with Parts, Operation and Maintenance Manual Form No. MHD56234, Edition 2.

INSTALLATION INSTRUCTIONS

General Instructions

Drawing references and page numbers are from Parts, Operation and Maintenance Manual Form No. MHD56234, Edition 2, unless otherwise referenced, and shall be used in conjunction with this instruction sheet.



• Shut off, bleed down and disconnect air supply line before installing brake release kit.

Removal of Existing Parts

Refer to Dwg. MHP2277 on page 50.

1. Remove and discard hose assembly (480) and fitting (518) connecting the old style valve (493) with control valve assembly (201).
2. Remove and discard valve (493), fitting (492) and bushing (490).
3. Remove and discard dump valve (178) and fitting (181).

Installation of Brake Release Kit

Refer to Dwg. MHP2462 on page 2 and MHP2277 on page 50.

1. Separate union assembly (914).
2. Install new brass nipple fittings (181) in the disc brake assembly port and valve port (493).
3. Install one half of connector fitting (914) on brass nipple (181).
4. Install other half of connector fitting (914) on brass nipple fitting in valve (493).
5. Install the new valve assembly (493) by joining the connector fittings (914). Position valve knob pointing up.
6. Install elbow fittings (482) in valve.

7. Install new hose assembly (480) between the new valve assembly (493) and tee fitting (397) on control valve (201). Attach the 90° end of the hose on the upper 90° fitting on the valve.
8. If winch has an emergency brake accumulator installed the following instructions apply:
 - a. Remove cap, from lower 90° fitting (482) on valve.
 - b. Attach the free end of hose disconnected in procedure 2 above, to the lower 90° fitting on the valve.
9. Reconnect all main air supply lines.

Testing

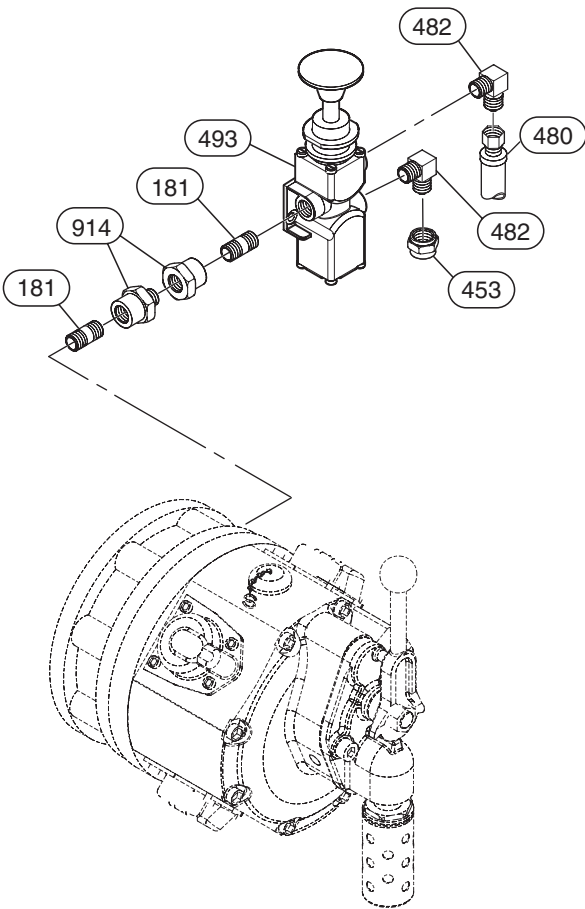
Normal Operation:

1. Activate main air supply to the winch.
2. Operate the winch in both directions. Ensure the winch runs freely in both directions.
3. Attach a load to the winch. Operate the winch and ensure the winch runs smoothly in both directions and brake holds the load when control handle is released.

Emergency Operation with Accumulator Installed:

1. Attach a load of at least 250 lbs (113 kg) to the winch.
2. Suspend the load a few inches above the deck.
3. Shut off the main air supply to the winch.
4. Activate the emergency brake release valve by pressing on the knob.
5. Ensure that the brake releases and that the load lowers.
6. Release the knob. ensure the brake sets and the load stops moving.
7. Activate main air supply to the winch.
8. Lower the load to the deck.

PARTS LIST AND DRAWING



Item No.	Description of Part	Qty Total	Part Number
---	Brake Release Kit *	1	29222
181	Fitting, Nipple (brass)	2	71406938
453	Cap	1	71111975
480	Hose Assembly	1	29227-1
482	Fitting, Elbow (brass)	2	71098552
493	Valve	1	71405823
914	Connector Fitting (brass)	1	71406946

* Includes items 181, 453, 480, 482, 493, and 914.

(Dwg. MHP2462)